



PLAINS GRAINS INC.



HRW Harvest Update

August 23, 2024

State Updates

Rail strike: Watching for impacts on shipments moving to PNW. Monitoring fertilizer supply issues related to rail strike and its impact on planting season.

WY: Adequate planting moisture will likely stabilize fall planting. Planting should pick up next week.

MN: About 50% of the crop was harvested before recent rains. After rains, some concerns with FN and sprout damage though too early to tell how widespread. If stays dry, harvest should be wrapped up in next 10 days.

ND: Beautifully yielding crop with blemishes. Close to 25% harvested. Debate about how much of mature crop was hit by recent rains. Hearing reports of higher DON levels likely due to crop rotation, varieties planted and fungicide applications. Proteins skewing lower than last few years. DHV was impacted by rains. Growers in northern ND with green wheat likely not impacted by rains and high humidity. A lot of good, sound wheat was harvested before the rains. Durum crop has been slower ripening. Harvest (5-10%) has begun with good quality reported. Not sure if any impact from recent rains.

MT: Winter wheat is about 80% harvested. Delays with scattered showers. Overall, great winter wheat crop with excellent yields. Protein is variable. Reports from 9-12% with average 11.4%. Test weights are strong (62 lb/bu). Watching for isolated sprout and FN issues in last 20% of crop. Spring wheat is 40-50% harvested. Frequent showers slowing harvest. Good for fall moisture but frustrating for harvest. Below average yields, concerns about TWs. FN solid 350+. DHV is strong in 80s. Proteins are strong, upper 14s. Durum is similar. Earlier seeded durum is yielding upper 30 bu while later seeded low 20s. Probably 25-26 bu crop. Slightly lighted test weight, high protein, high color scores.

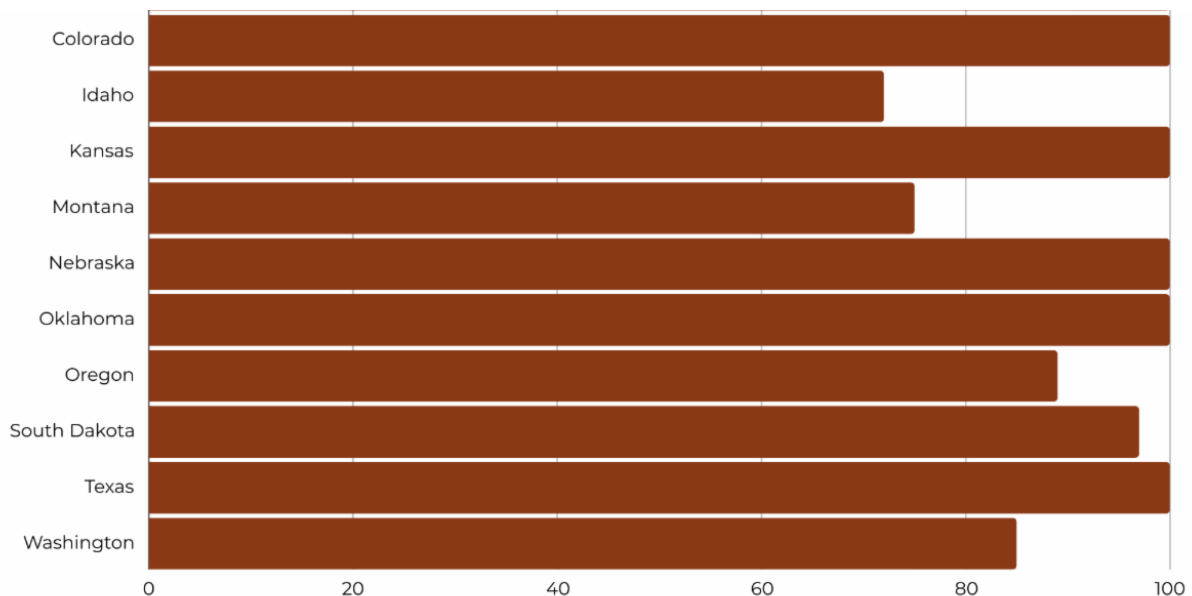
ID: Similar to MT. Spring wheat = high proteins, low yields. Winter wheat = low protein, really high yields. Rain in southern ID last week; no quality concerns just slight harvest delays. Low TWs in pockets. No major concerns with weather. Temps are still high but coming down.

WA: winter wheat about 90% harvested. Most regions average to above average yields. Lower yielding areas due to lack of rain/frost damage, which was in lower producing areas. Proteins are trending low (9-10%). No FN issues. TWs have been excellent. Spring wheat (only 15% of planted area) is below average. Didn't have moisture and a lot of weather issues (late frost, serious heat). Biggest challenge right now is running out of bin space. Came into this harvest season with 60% of capacity because of carry over. This will be a really big concern. Off and on showers slowing harvest. Moderate temperatures.

OR: Limited rain that temporarily delayed harvest. Yields look strong. Generally expecting above average. Concerns are price challenges and tight capacity. Very large crop this year and carry over from last year. We do have overall some lower proteins. Good opportunities for blending with last year's high protein crop. Everything looking good on quality. Planting season starting mid-September.

USDA/ARS: 495 samples received. 81 composites made. Milling yields are average 75%; good milling crop. Proteins are trending lower than average. Flour protein is also lower than average. Flour color is good. Ash levels are .52-.53. FN is over 400. The crop is softer mixing. Farino absorptions are about the same as 5YA. Development time and stability are similar to last few years. Extensograph is a little lower on r-max than last few years. This is a slightly weaker, more extensible crop so far. Bake data on 19 loaves – loaf volumes are down to 842. Reflects lower protein samples. Expect numbers will go up. Protein content to loaf volume is holding similar to past few years. There is some quality in the crop but there is potentially less protein.

Winter Wheat Harvested by State



Wheat Data and Grade Factors

# of Samples	Avg. Moisture %	Avg. Protein %	Avg. Dockage %	Avg. TKW(g)	Avg. Falling # (sec)
495	11.2%	12.0%	0.6%	29.5 g	361.3 sec

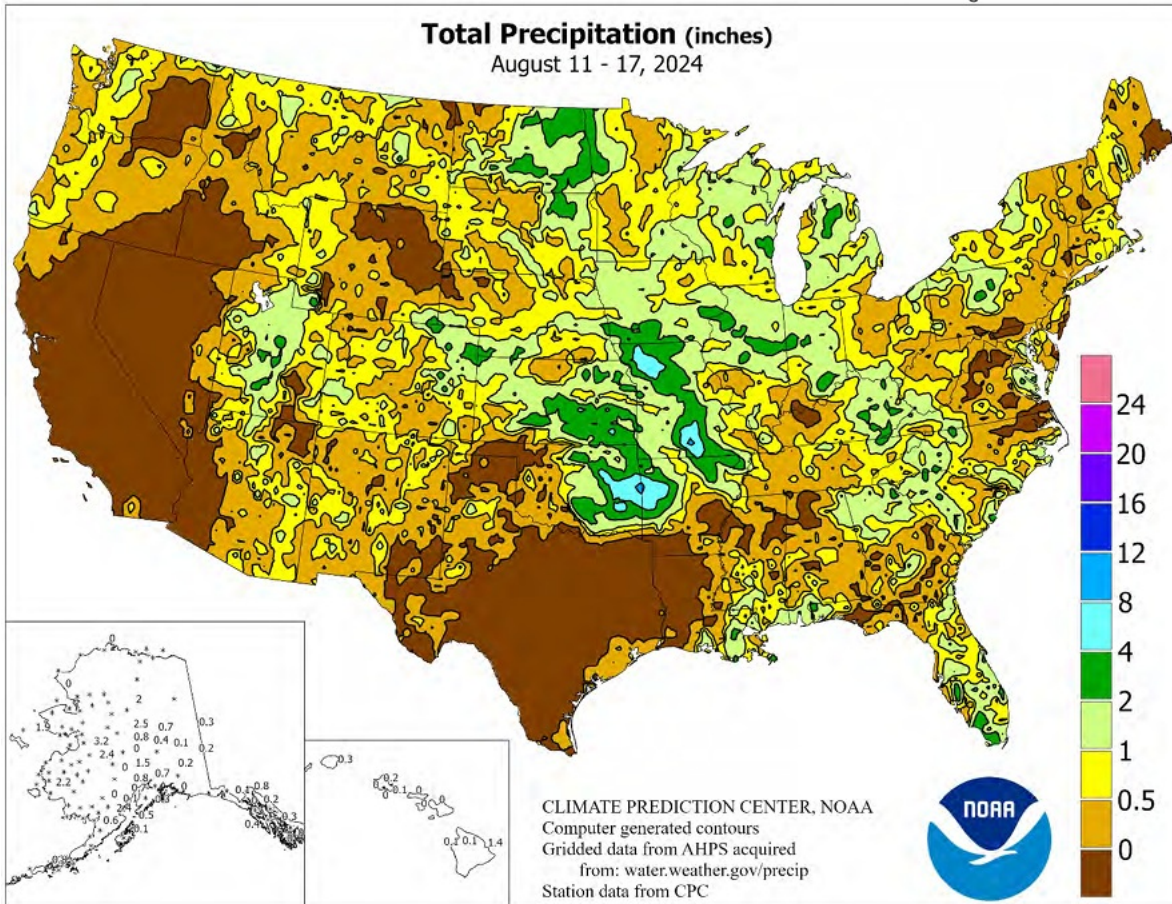
Grade	Avg. Test Weight (lb/bu)	Avg. Test Weight (kg/hl)	Avg. Foreign Material %	Avg. Damage %	Avg. Shrunken & Broken Kernels %	Avg. Defects %
1 HRW	61.1 bu/lb	80.4 kg/hl	0.1%	0.2%	0.8%	1.0%

These are straight averages of the data. Not all samples have been through all the tests at this time. This is preliminary data from the samples that have completed these tests at the time of publication and the data will continually change until all samples have been collected and analyzed.

Milling Data		Baking Characteristics	
Composite Samples	54	Composite Samples	20
Extraction %	75.1	Mix Time (min) <i>(40 samples for this test)</i>	3.6
Flour/Dough		Bake Absorption (14%mb)	58.4
Composite Samples	40	Loaf Volume (cc)	800
Protein (14%mb)	10.99	Crumb Grain (1-10)	5.2
Ash (14%mb)	0.52	Crumb Texture (1-10)	5.2
Farinograph (14%mb)	58.89		

The following data is straight averages based on a limited number of composite samples from Texas and Oklahoma. Not all samples have had all the testing completed. This data will continuously change as more composite samples complete the testing process.

Weather Outlook



Oregon Wheat Commission Harvest Update

The Oregon wheat harvest is beginning to wrap up in many areas of the state, but continues in higher elevations. USDA estimates winter wheat harvest for Oregon at 89% complete for the week ended August 18th, which is just slightly behind the 5 year average of 93% complete. At the end of last week portions of the state received scattered rain and hail, but the impact was limited given harvest progression.



Production continues to reflect strong yields through the state. In the August report, USDA bumped up the Oregon production figure estimates to a total of 55.8 million bushels (up 10% from last month's estimation and up 28% from last year).

Montana Harvest Update

From Bozeman, Brenton Melton of Bos Farms gives a hard red winter wheat update. Beautiful footage, check it out! Montana's winter wheat harvest is nearly wrapped with spring wheat and durum about half finished; barley is about 30% done.



[Watch Report Here](#)

Idaho Harvest Update

Idaho wheat producers continue the harvest season. Watch a producer harvest video below!



[Watch Harvest Here](#)

Things to Know

2024 HRW State Variety Trials

Check out the variety trials from the HRW states for 2024!

[Texas](#)

[South Dakota](#)

[Oklahoma](#)

[North Dakota](#)

[Kansas](#)

[Montana](#)

[Colorado](#)

[Idaho](#)

[Nebraska](#)

[Oregon](#)

[Wyoming](#)

[Washington](#)



Plains Grain Inc.
P.O. Box 80085
700 R St.
Lincoln, NE 68501
[765-688-0085](tel:765-688-0085)

[Contact Us](#)

Plains Grains Inc. | PO Box 80085 | Lincoln, NE 68501 US

[Unsubscribe](#) | [Update Profile](#) | [Constant Contact Data Notice](#)



Try email marketing for free today!