



PLAINS GRAINS INC.



## HRW Harvest Update

August 01, 2024

### State Updates

**WY** – Few irrigated acres left, dryland harvested. 30 bu avg. TW held up well – 60+, 12% - 14% Protein. Not as much sawfly this year – timing, later dormancy, already had emerged.

**NE** – Harvest completed. Strong yields. 60-70 bu/ac, late fields some exceptional yields 100+ (irrigated and dryland). Early TW good, rain mid-harvest hurt some TW. 56-62 lbs. 9-13% proteins. State avg. 11-11.5% estimate. Overall happy with harvest.

**SD** – Winter wheat 3/4<sup>th</sup> finished. Storms past few night slowing things down. Great yields – some triple digits. Isolated dry pockets lower yields. Variable protein, some lower but average around 11-12%. Spring wheat down slightly in acres – dry weather.

**MN** – Nearing harvest, later planted still a few weeks behind. HRS tour est. 54.5 bu/ac. Fields look great.

**ND** – High expectations. Lots of good crop statewide/lots of potential. Concerns in western part of state, extended heat/dryness. Disease pressure concerns – fusarium.

**MT** – Hot/dry/windy pushing maturity quickly. Winter wheat 1/3<sup>rd</sup> cut, moving quick. Expecting to be around avg. yield of 50 bu. June was average, but the cool weather helped. Good stands from last year. Averaging low 11s protein state wide, triangle area 12s. Lower protein demand concerns. No TW issues. Some isolated spring wheat cut. Hot/dry/windy since July 8<sup>th</sup>, crop concerns but ratings remaining steady, est. yields 30 bu and 14% pro+.

**WA** - 40-45% harvested for winter. Most regions positive reports, only place hearing below avg. Ritzville area – very dry, minimal rain. Rest reporting avg. to above avg. yields. Some low proteins but most averaging between 9-10%, expecting overall to be 9.5 – 10.5%. Going North may see higher protein. Extreme heat, but winter wheat far enough along, may see

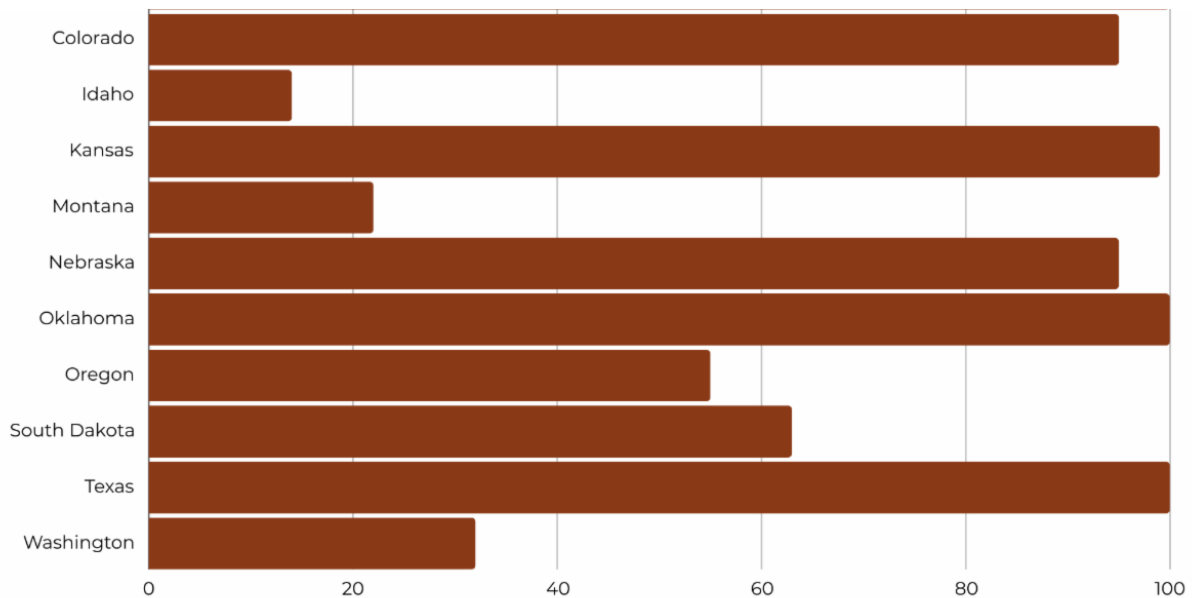
issues with spring wheat (only 15% harvested). No TW issues. Sprinkle of rain in some areas.

**OR** – Above 50% harvested, on schedule. Good crop conditions – above average in dryland area, good yields across state. Expectations for lower protein SW, less stress. TW good, no FN issues. Fires not hitting much in the crop areas.

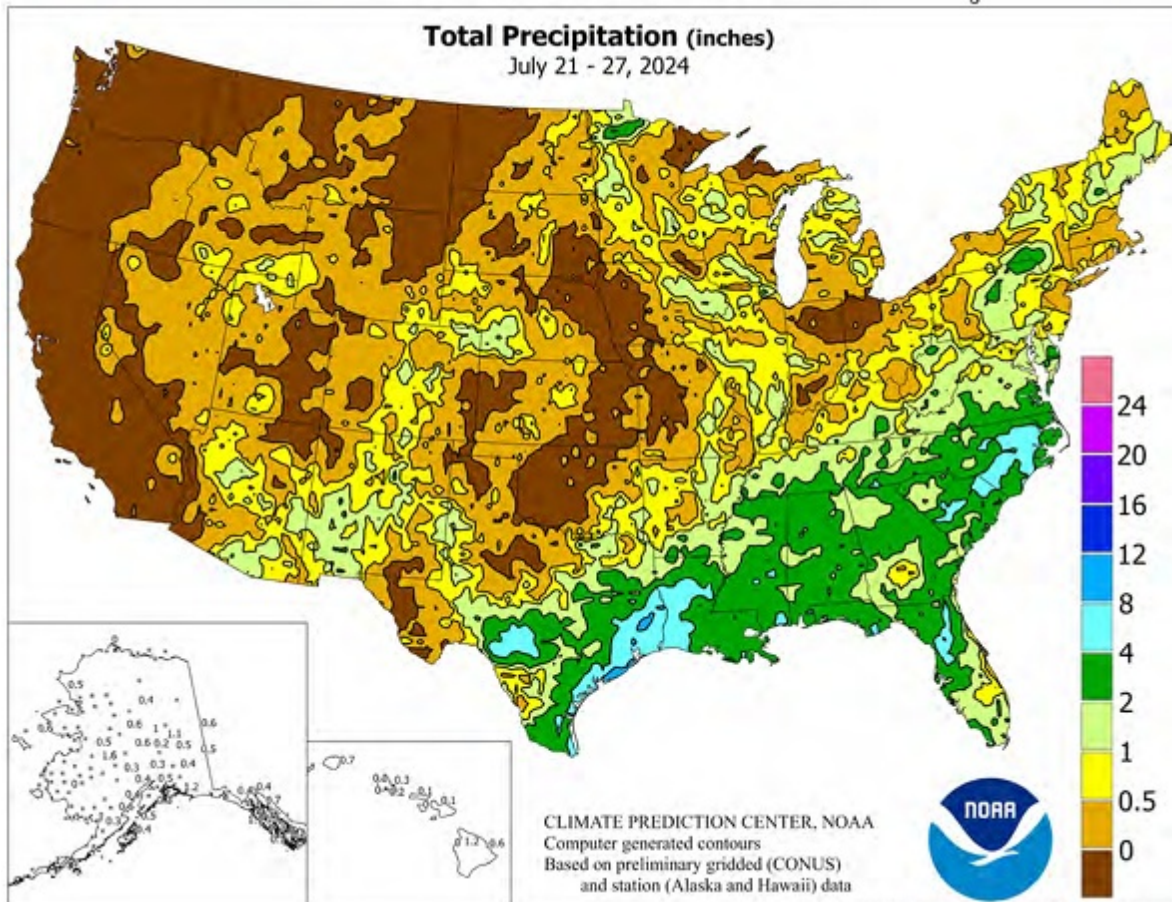
**ID** - Idaho harvest is picking up. No disease pressure. Yields are very good and protein is slightly low to average. Less than halfway through harvest of winter wheat, but no red flags of disease pressure at this point. Very hot and dry weather in the forecast with temps in the triple digits will speed things up.

**USDA/ARS** – Tail end of receiving sample. 456 samples processed. 39 composites. TW average 61.2, above 3 year avg. predicting high TW crop, kernel size above avg, slightly below 2023. 67.4 L. Protein slightly below avg – 12.0% vs. 12.5%, hardness 60.5, 1000 kw 30.6, FN good – lowest 237, avg. 362. Milling next week.

## Winter Wheat Harvested by State



## Weather Outlook



## Wheat Data and Grade Factors

# of Samples	Avg. Moisture %	Avg. Protein %	Avg. Dockage %	Avg. TKW(g)	Avg. Falling # (sec)
456	11.2%	12.0%	0.6%	29.4 g	362.9 sec

Grade	Avg. Test Weight (lb/bu)	Avg. Test Weight (kg/hl)	Avg. Foreign Material %	Avg. Damage %	Avg. Shrunken & Broken Kernels %	Avg. Defects %
1 HRW	61.0 bu/lb	80.2 kg/hl	0.1%	0.2%	0.8%	1.0%

*These are straight averages of the data. Not all samples have been through all the tests at this time. This is preliminary data from the samples that have completed these tests at the time of publication and the data will continually change until all samples have been collected and analyzed.*

## Montana Wheat Harvest Update

By: Montana Wheat & Barley Committee  
August 01, 2024

Montana wheat producer, Clint Hammond, brings us news from Hardin where he's cutting winter wheat. He's seeing 50 bushels/acre averages and good test

Watch Report Here



## South Dakota Wheat Outlook

★ **Wheat Progress** *Revised July 29, 2024*

*As of July 29, 2024*

	Winter Wheat		Spring Wheat	
	Headed %	Harvested %	Headed %	Harvested %
2024	-	63	-	8
Last year	-	66	-	18
5-year avg	-	63	-	18

★ **2023-24 Winter Wheat Conditions**

	Very Poor %	Poor %	Fair %	Good %	Excellent %
June 24:	0	4	23	56	17
July 02:	1	4	19	57	19
July 09:	1	5	27	56	11
July 15:	1	5	29	57	8
July 22:	0	5	30	55	10
July 29:	0	4	22	56	18

★ **2024 Spring Wheat Conditions**

	Very Poor %	Poor %	Fair %	Good %	Excellent %
June 24:	0	2	20	71	7
July 02:	1	2	16	74	7
July 09:	0	2	23	69	6
July 15:	1	4	29	59	7
July 22:	1	7	29	54	9
July 29:	1	4	25	65	5

★ **Soil Moisture**

*As of July 29, 2024*

	Very Short %	Short %	Adequate %	Surplus %
Topsoil	4	2	68	6
Subsoil	3	16	74	7

**World Agricultural Supply and Demand Estimates**

*As of July 12, 2024*

- The 2023/24 U.S. all wheat supply and demand outlook is for lower supplies, reduced domestic use, unchanged exports, and higher ending stocks.
- The 2023/24 global wheat outlook is for larger supplies, consumption, exports, and smaller ending stocks as compared with last month.
- World ending stocks are reduced 0.6 million tons to 258.3 million and would be the lowest since 2015/16. Ending stocks are lower for India and Ukraine but these are partially offset by increases in Algeria and the EU.

**South Dakota Wheat Stocks**

*As of June 28, 2024*

- Total stocks: 19.7 million bushels (-8% from 2023)
- On-farm stocks: 6.8 million bushels (-20% from 2023)
- Off-farm stocks: 12.9 million bushels (+0% from 2023)

**2024 South Dakota Winter Wheat**

*As of July 12, 2024*

- 870,000 acres est. planted (-5% from 2023)
- 780,000 acres projected harvested (+11% from 2023)
- 90% of planted acres projected harvested (+14% from 2023)
- 44.5 million bushels projected (+35% from 2023)
- 57 bushels per acre projected (+10 from 2023)

**2023 South Dakota Winter Wheat**

*As of September 29, 2023*

- 920,000 acres est. planted (+11% from 2022)
- 700,000 acres projected harvested (-4% from 2022)
- 76% of planted acres projected harvested (-12% from 2022)
- 32.9 million bushels projected (-13% from 2022)
- 47 bushels per acre projected (-5 from 2022)

**2024 South Dakota Spring Wheat**

*As of July 12, 2024*

- 720,000 acres est. planted (-3% from 2023)
- 670,000 acres projected harvested (+3% from 2023)
- 93% of planted acres est. harvested (+5% from 2022)
- 33.5 million bushels projected (+20% from 2023)
- 50 bushels per acre projected (+7 from 2023)

**2023 South Dakota Spring Wheat**

*As of September 29, 2023*

- 740,000 acres est. planted (-1% from 2022)
- 650,000 acres est. harvested (-8% from 2022)
- 87.8% of planted acres est. harvested (-8.1% from 2022)
- 28.0 million bushels projected (-18% from 2022)
- 43 bushels per acre projected (-5 from 2022)

Source: USDA NASS [www.nass.usda.gov](http://www.nass.usda.gov)

Jonathan Kleinjan, Executive Director  
South Dakota Wheat Commission  
[jon@sdwheat.org](mailto:jon@sdwheat.org) (605) 697-8033

★ *Identifies data changed since last report*

# Nebraska Wheat Crop Report

August 1, 2024



## USDA Crop Progress Report for the week ending July 29th, 2024

Winter wheat harvest is reported 95% completed for the state, compared to the 5-year average of 78%. Topsoil moisture is reported to be 7% very short, 30% short, 54% adequate and 9% surplus. Subsoil moisture is reported to be 6% very short, 27% short, 58% adequate, and 9% surplus.

### Northern Panhandle

Harvest is coming to an end in the northern panhandle region with only a couple of fields left to harvest. A few local producers experienced reduced yields due to hail and disease damage. Test weights averaged above 60 and yields averaged between 30-50 bu/acre. Overall, the 2024 harvest season went well.

#### Weather Temperatures - Alliance, NE

August	1st	2nd	3rd	4th	5th	6th	7th
High	98	98	97	98	94	89	82
Low	59	58	61	64	58	57	53

### Southern Panhandle

Areas across the southern panhandle are completely done with harvest, but took longer than expected due to high humidity and moisture in early July. The moisture caused damage to test weights a bit but yields were great and averaged 50-70 bu/acre. Overall, harvest across the region was phenomenal with great yields and protein numbers.

#### Weather Temperatures - Sidney, NE

August	1st	2nd	3rd	4th	5th	6th	7th
High	97	98	95	97	96	89	84
Low	62	61	62	65	61	60	56

### Southwest

Harvest is 100% complete in the area. A local producer expressed that yields and test weights averaged about 60 with protein averaging around 12. However, disease such as Wheat Streak Mosaic and Stripe Rust slightly hindered yields in a few areas, but overall harvest went well!

#### Weather Temperatures - McCook, NE

August	1st	2nd	3rd	4th	5th	6th	7th
High	96	97	94	97	99	92	88
Low	66	67	66	71	69	66	61

### Southcentral

The south central region is done with the 2024 harvest season. A local producer states that test weights averaged between 56-62 lbs. Average yields varied across the board but some producers have seen 100 bu/acre, but many averaged 50-70.

#### Weather Temperatures - Kearney, NE

August	1st	2nd	3rd	4th	5th	6th	7th
High	91	92	91	93	94	86	84
Low	64	64	66	69	67	65	59

### Southeast

Harvest in the southeast is 100% complete. A local producer explained that the average protein ranged from 9-11. Test weights averaged around 58 with yields averaging around 75 bu/acre. Overall, this harvest season has been remarkable with outstanding yields across the area.

#### Weather Temperatures - Lincoln, NE

August	1st	2nd	3rd	4th	5th	6th	7th
High	92	94	94	95	96	88	86
Low	65	64	68	70	71	67	62

**This is the last harvest update of the 2024 wheat harvest season.**

**To receive more information about wheat quality data, please visit Plains Grains Inc. (PGI) at <https://www.plainsgrains.org/> to be added to the weekly update.**

## Things to Know

### 2024 HRW State Variety Surveys

Check out the variety surveys from the HRW states for 2024!

[Kansas Variety Survey](#)

[Colorado Variety Survey](#)

[Texas Variety Survey](#)

[Nebraska Variety Survey](#)

[Montana Variety Survey](#)



**Plains Grain Inc.**  
P.O. Box 80085  
700 R St.  
Lincoln, NE 68501  
**765-688-0085**

[Contact Us](#)

Plains Grains Inc. | PO Box 80085 | Lincoln, NE 68501 US

[Unsubscribe](#) | [Update Profile](#) | [Constant Contact Data Notice](#)



Try email marketing for free today!